

Project Completion Report

Reline of Sprinkler Tank

Shopping Centre - Manchester



Project Overview

Site name: Shopping Centre, Manchester

Completion Time: 8 days

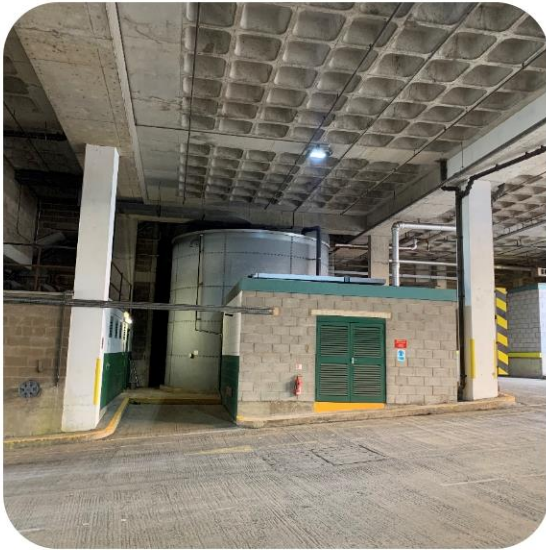
Scope of Works: Prepare and reline 1no steel fire sprinkler tank (tank 6m in diameter and 5.4m in height) using WRAS approved solvent free polyurethane. The concrete base will be screeded and sealed to repair any defects in the concrete prior to relining works and a new low-level access hatch is to be installed.

Methodology

- Upon arrival, tanks to be drained down by Titan Mechanical Services - **Complete**
- A low-level access hatch is to be installed to allow easy access and egress from the tank. - **Complete**
- Surface Preparation, the concrete base will be screeded and sealed to repair any defects in the concrete prior to relining works. All accessible bolts to be tightened, mastic joints assessed and repaired where necessary. All surfaces will be abraded to raise a surface profile of ~75microns - **Complete**
- Prior to application of Solvent Free Polyurethane, where necessary, dehumidification/heating equipment will be used to ensure correct curing conditions are achieved. - **Complete**
- Application of Stripe Coat - the product to be applied by brush to all joints, edges, bolt heads, struts and other sharp protuberances to ensure any high-risk areas are secured and enable subsequent coating to be a seamless membrane - **Complete**
- Application of First Coat - the product to be applied by roller to all internal surfaces to a minimum 500-micron wet film thickness - **Complete**
- Application of Second Coat - the product to be applied by roller to all internal surfaces to a minimum 500-micron wet film thickness to achieve a desired 1000-micron total coating thickness on all internal surfaces - **Complete**
- Re-commissioning of the tank - upon completion of works, the tank will be refilled and disinfected in accordance with the requirements of PD855468:2015, before being returned to service. **Complete**

Mechanical Works

The photos below show the installation of a new low-level access hatch to allow safe access and egress.



Relining Process

The photos below show the tank at various stages of the process, from preparation of the surface to the final application of the 2nd coat.



